


	Title Resource Kit for PRT100 Printer User's Guide	Rev. 1.04	Date 09/07/2004
---	---	----------------------------	----------------------------------

Resource Kit for Retail POS


User's Manual

for PRT-100 POS Printer model

 <i>Systems Division</i>	Title Resource Kit for PRT100 Printer User's Guide	Rev. 1.04	Date 09/07/2004	Page 2/19
---	---	----------------------------	----------------------------------	----------------------------

Contents

1. GENERALITY.....	3
1.1. Document releases	3
1.2. Reference documents	3
1.3. Conventions	3
2. INTRODUCTION	4
3. SELECT LANGUAGE WINDOW	4
4. SELECT TOOL WINDOW	5
5. DOWNLOAD FIRMWARE	6
5.1. Download Tool.....	8
6. DOWNLOAD LOGO.....	8
7. PRINTER SETUP.....	12
7.1. Enter printer setup	13
7.2. Load setup from disk	15
7.3. Create setup file.....	17
8. MEMORY PARAMETERS	18

 <i>Systems Division</i>	Title Resource Kit for PRT100 Printer User's Guide	Rev. 1.04	Date 09/07/2004	Page 3/19
---	---	----------------------------	----------------------------------	----------------------------

1. Generality



1.1. Document releases


Revision	Date	Pages	Comments
1.00	16/07/2003	10	First edition
1.01	03/12/2003	10	Add: Forced FW download and new logo's windows
1.02	15/12/2003	13	Added setup
1.03	11/02/2004	18	New setup features and memory parameters
1.04	09/07/2004	18	Added Download Tool description

1.2. Reference documents

Reference	Name	Description
1	Printer Configuration Tool.pdf	Printer Configuration Tool User's Guide
2	PRT100_Installation.pdf	Installation Kit User's Guide

1.3. Conventions

Example	Description
( 1)	Reference document number. Es. ( 1) Means first document of the reference documents list.

 Systems Division	Title Resource Kit for PRT100 Printer User's Guide	Rev. 1.04	Date 09/07/2004	Page 4/19
--	---	----------------------------	----------------------------------	----------------------------

2. Introduction

This document describes the Resource Kit application. It is a collection of tools that allows the user to configure the printer.

The tools now available are:

- ?? **Download Firmware:** To update the printer FWs
- ?? **Download Logo:** To memorize logos in the printer memory
- ?? **Printer Setup:** To change the printer setup
- ?? **Memory Maintenance:** To upload the factory and user memory parameters

The application can run in local or in a network installation (see 2). So it works with printers plugged on the same PC where the application is running or in another PC in the local network previously configured using the Printer Configuration Tool (see 1).

NOTE: before working with the Resource Kit it is necessary to configure the printer using the Printer Configuration Tool (see 1).


3. Select Language Window

When the Resource Kit starts it shows a window to select the languages.

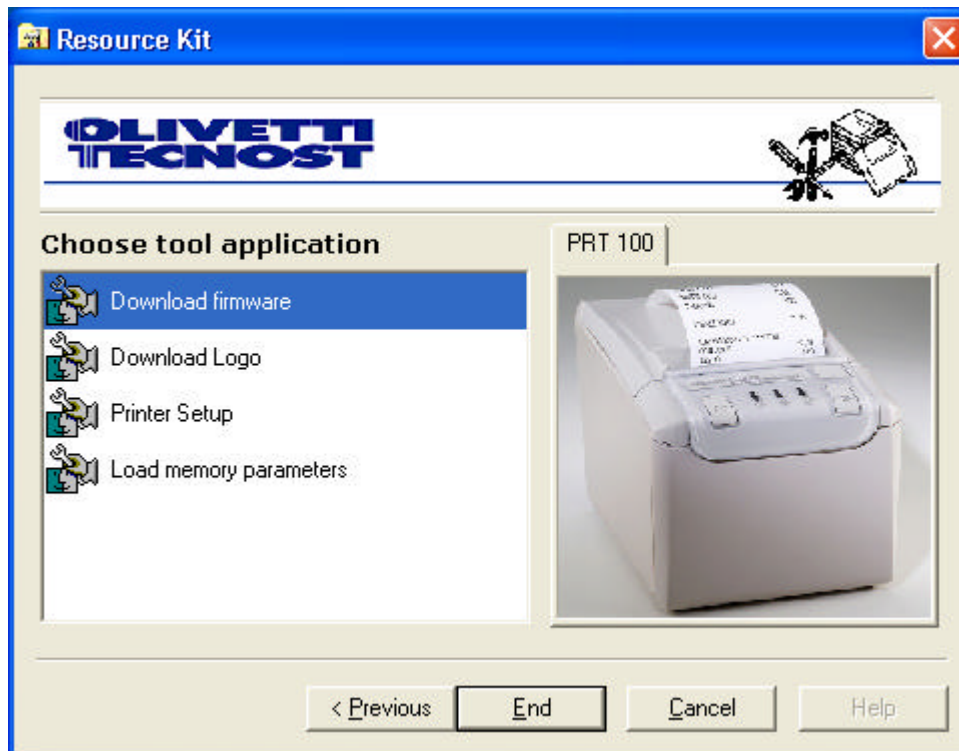
If there is only one language available this window will be not displayed.



Clicking the "Next" button the "Select Tool Window" will be shown

 <i>Systems Division</i>	Title Resource Kit for PRT100 Printer User's Guide	Rev. 1.04	Date 09/07/2004	Page 5/19
---	---	----------------------------	----------------------------------	----------------------------


4. Select Tool Window



This window allows the user to select the tool to run.

The tools available are:

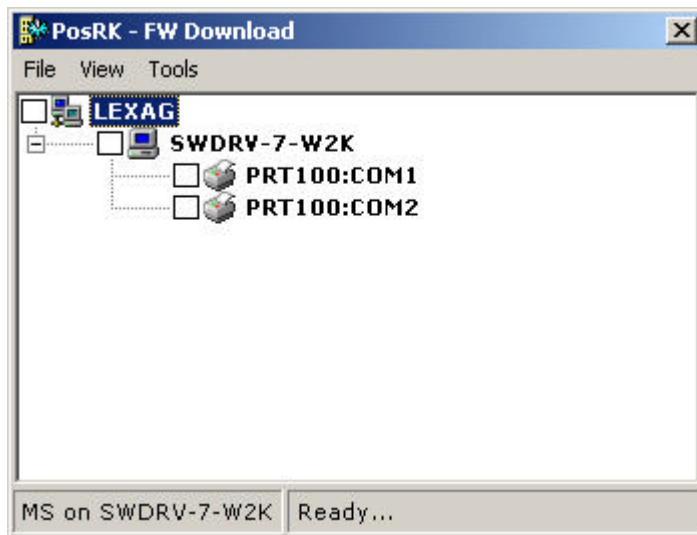
- ?? Download firmware.
- ?? Download Logo.
- ?? Printer Setup
- ?? Load memory parameters

 <i>Systems Division</i>	Title Resource Kit for PRT100 Printer User's Guide	Rev. 1.04	Date 09/07/2004	Page 6/19
---	---	----------------------------	----------------------------------	----------------------------

5. Download firmware

The "Download firmware" tool allows to upgrade the FW of the installed printers.

The first window shows is the following:



This window shows all the printers installed in the system. The printers have to be previously installed using the the Printer Configuration Tool (see 1).

The "File" menu allows to select the kind of firmware to download.

The possible choices are:


- ?? **Boot Download:** to download the boot section
- ?? **FW Download:** To download the program and font section
- ?? **Forced Download:**
 - o **Boot Download:** to download the boot section in forced mode
 - o **FW Download:** To download the program and font section in forced mode

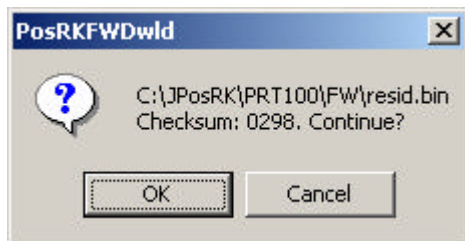
The "Tools" menu allows to add or remove another server where the printers may be installed.

In order to start the download procedure need:

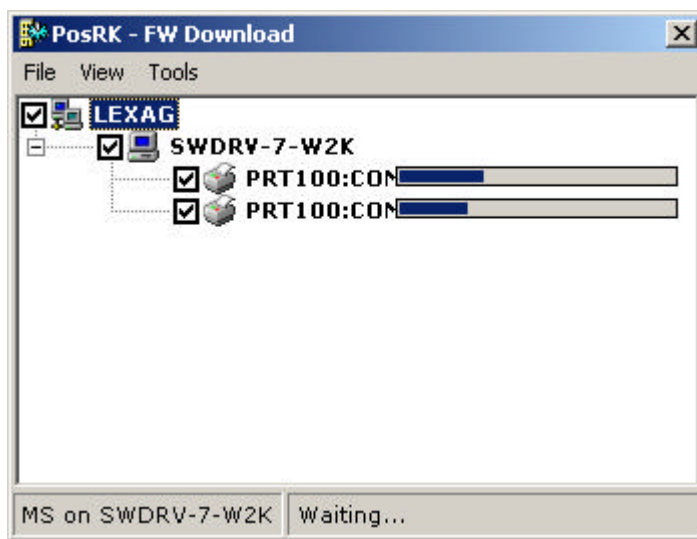
1. Select the printer/printers, of the same model, where the FW need to be upgraded. It is possible to select one or more printers, locally plugged or in the network, and the tool is able to download the FW to the selected printer in the same time.
2. Select in the "File" menu the FW to download

After these steps, before starting the download, the tool calculates the FW checksum shows the following confirmation window:

 <i>Systems Division</i>	Title Resource Kit for PRT100 Printer User's Guide	Rev. 1.04	Date 09/07/2004	Page 7/19
---	---	----------------------------	----------------------------------	----------------------------




Clicking "OK" the procedure starts and the progress bars show the status of the download:



When the download is completed or an error occurs, the progress bar is removed and a message is displayed in the same place.

NOTE: to perform the **FORCED DOWNLOAD** of Boot/Firmware, it is necessary to set the printer as described in the procedure below.

- disconnect the printer from the power supply and open the cover
- check that the paper roll is present.
- press and hold switch button and paper feed button together.
- connect to the power supply the printer, while holding down the two buttons and close the cover.
- release both buttons.
- the green led (printer on) must be on. If not repeat the procedure from the beginning.

 Systems Division	Title Resource Kit for PRT100 Printer User's Guide	Rev. 1.04	Date 09/07/2004	Page 8/19
--	---	----------------------------	----------------------------------	----------------------------

5.1. Download Tool

The Download Tool allows to download the FW in batch mode. The tool is compose by two files:

- ?? DwldTool.exe: exe file
- ?? DwldTool.ini: Configuration file.

The Configuration file has the [DWLDPARAM] sectin in which it is possible to configure the following parameters:

- ?? **INTERACTIVE:** The possible values are:
 - o **N:** The download is done without any confirmation by the user
 - o **Y:** A confirmation pop-up is shown
- ?? **FORCED:** The possible value are
 - o **N:** The tool executes a standard download
 - o **Y:** The tool executes a forced download
- ?? **PRINTER:** Select the printer and the port where execute the download. Possible values are
 - o **PRT100:COM1, PRT100:COM2 PRT100:COM8, PRT100:LPT1, PRT100:LPT2, PRT100:USB001, PRT100:USB002**
 - o **PRJ12:COM1, PRJ12:COM2 PRJ12:COM8, PRJ12:LPT1, PRJ12:LPT2, PRJ12:USB001, PRJ12:USB002**
- ?? **FILEPATH:** The folder where the FW is stored
- ?? **FILECS:** FW checsum=6E75
- ?? **FILETYPE:** The file type field can ha the following values:
 - o **BOOT:** For boot download
 - o **FW:** For FW download


Example:

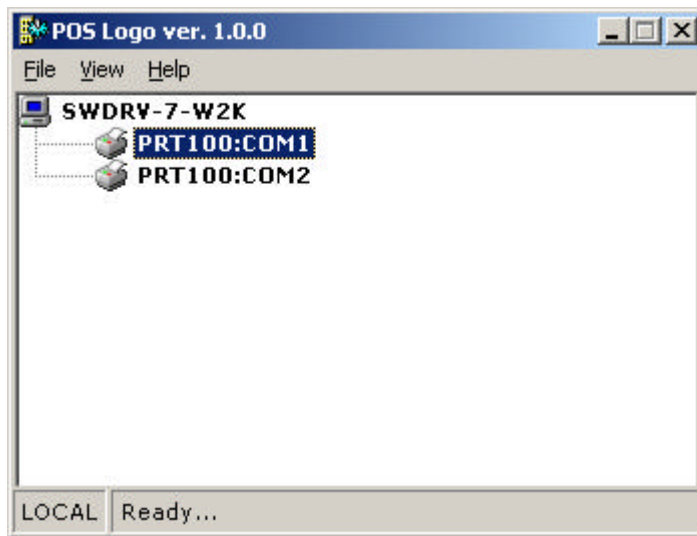
```
[DWLDPARAM]
INTERACTIVE=N
FORCED=N
PRINTER=PRT100:COM1
FILEPATH=C:\JPosRK\PRJ12\FW\bt100v07.bin
FILECS=6E75
FILETYPE=BOOT
```

6. Download Logo


This tool allows to download logos on the selected printer. This tool can work locally or can address a printer in the network, but the logo download can address one printer at time.

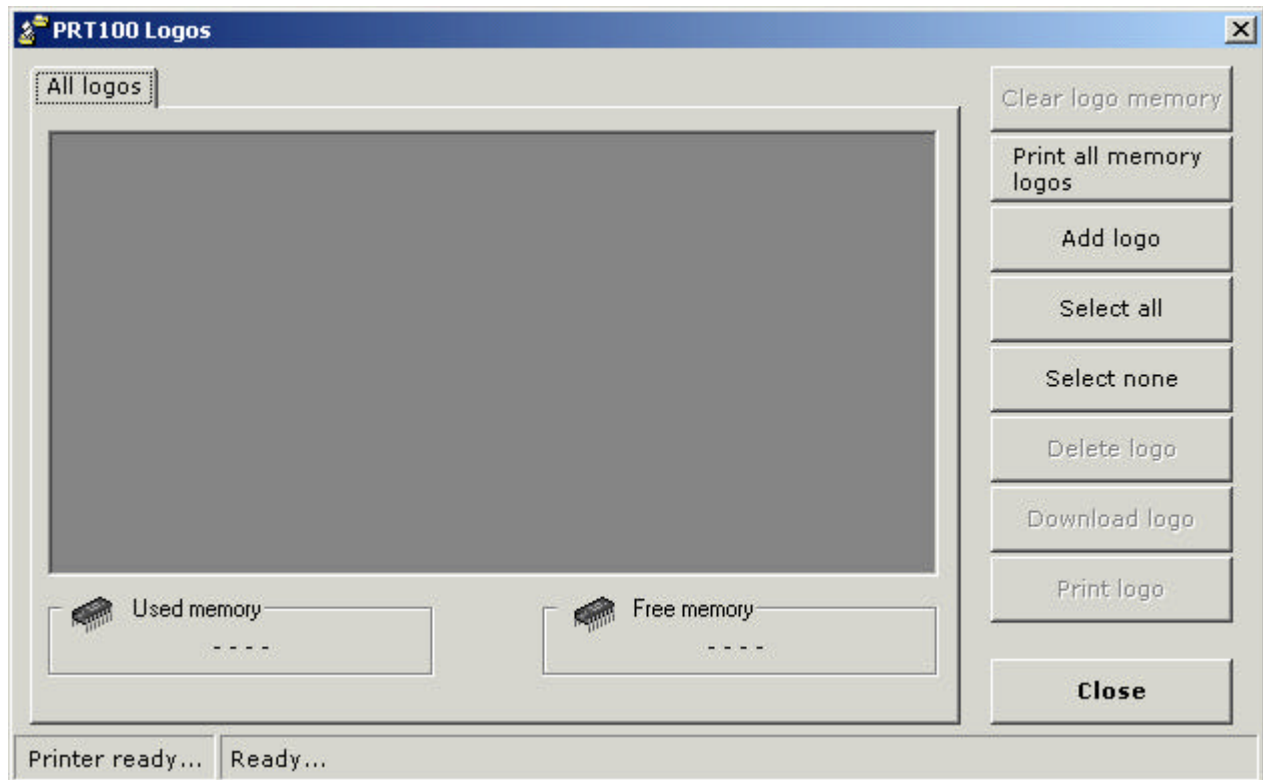
In the first window it is possible to select the printer to address in the download procedure.

 <i>Systems Division</i>	Title Resource Kit for PRT100 Printer User's Guide	Rev. 1.04	Date 09/07/2004	Page 9/19
---	---	----------------------------	----------------------------------	----------------------------



After selecting a printer the program will display the following window

 <i>Systems Division</i>	Title Resource Kit for PRT100 Printer User's Guide	Rev. 1.04	Date 09/07/2004	Page 10/19
---	---	----------------------------	----------------------------------	-----------------------------




Working with the PRT100 printer it's not possible to ask to the printer how many logos has already in memory, so this window, that should show a thumbnail for each logo in memory is empty.

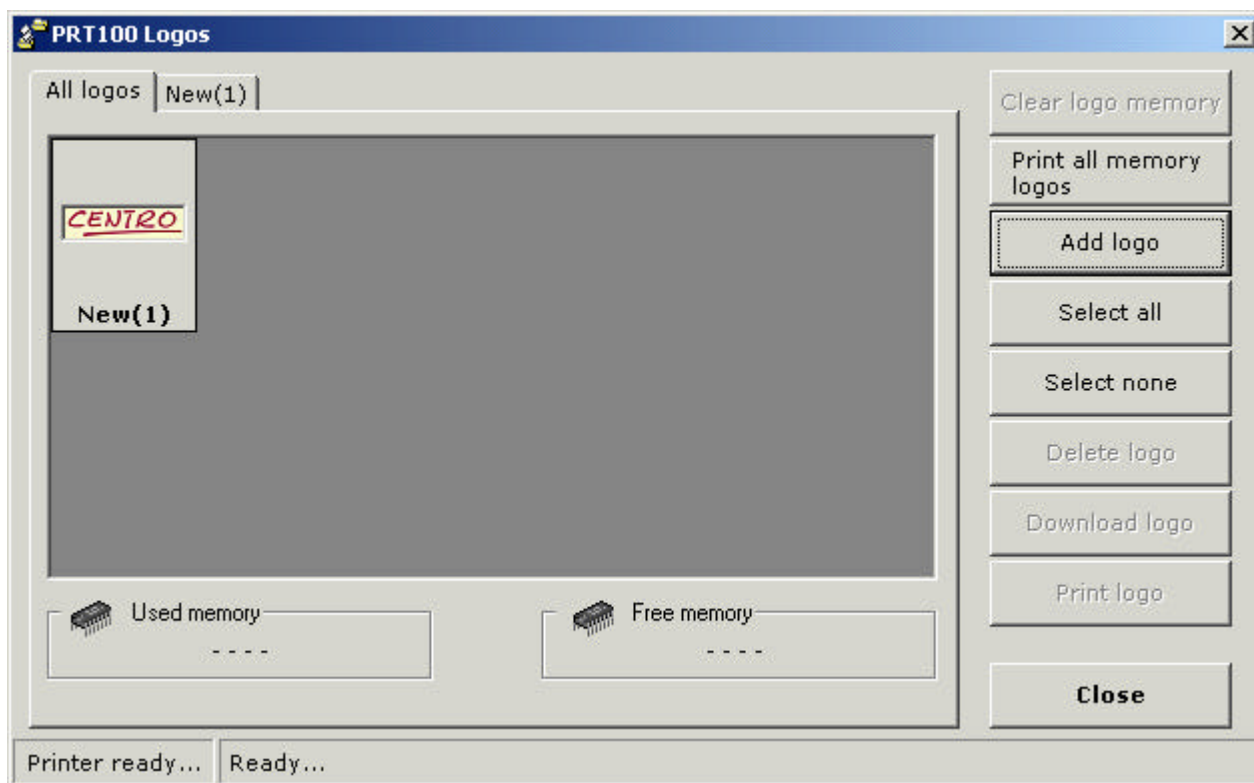
Pressing the "Add Logo" Button it is possible to browse in the PC directories to select one or more BMP files to use as logos.

The select files will be shown as thumbnail in the window. For each file is created also a new page (New(1), New(2)...New(N)).

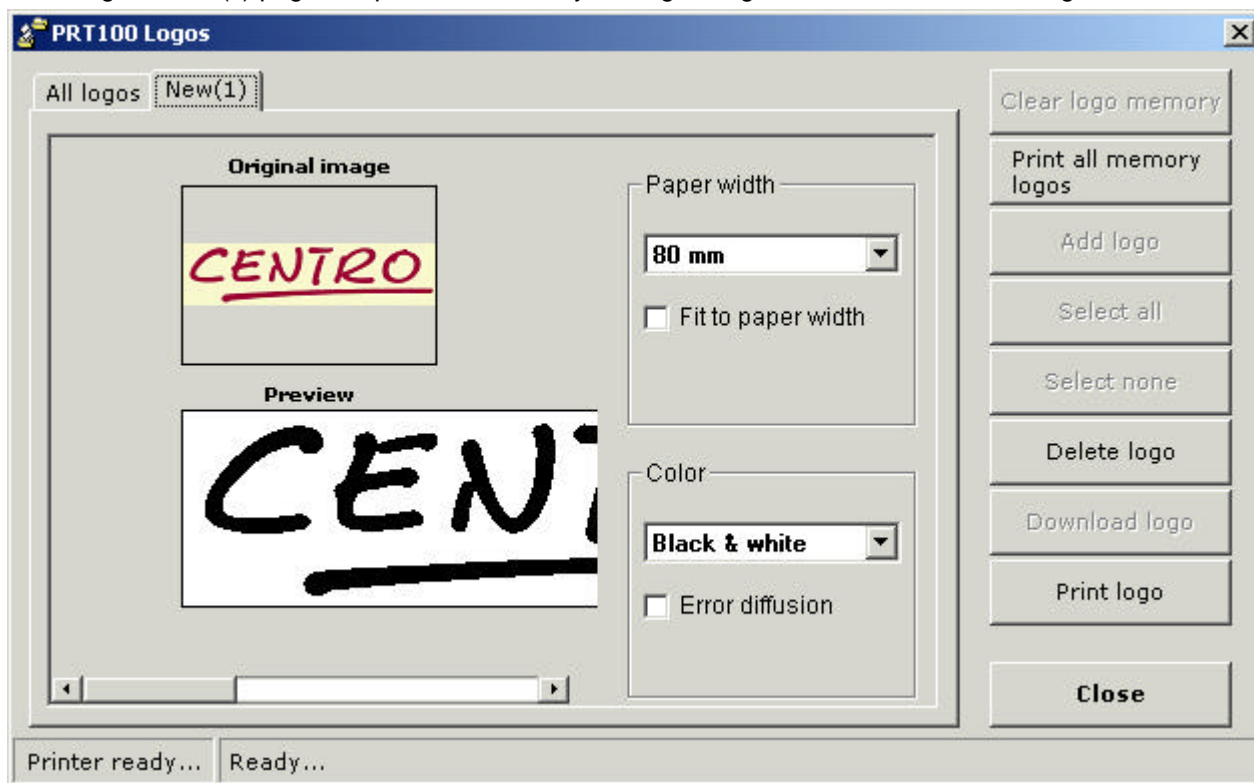
After that it is possible to select, clicking on the related thumbnails the logos to send to the printer using the "Send Logo" button.

The logos are not printed immediately but are stored in the printer memory.


 Systems Division	Title Resource Kit for PRT100 Printer User's Guide	Rev. 1.04	Date 09/07/2004	Page 11/19
--	--	---------------------	---------------------------	----------------------



Selecting the New(x) page it is possible to modify the logo image as shown in the following window

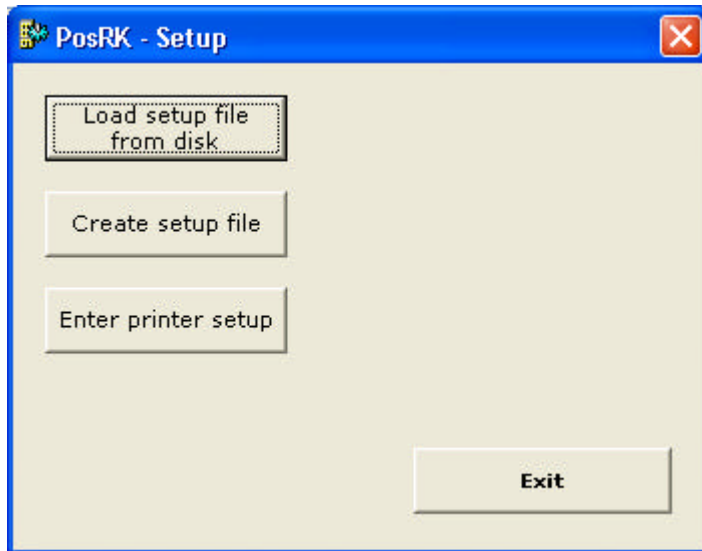


Using the print logo is it possible to print immediately the logo without storing it.

 <i>Systems Division</i>	Title Resource Kit for PRT100 Printer User's Guide	Rev. 1.04	Date 09/07/2004	Page 12/19
---	---	----------------------------	----------------------------------	-----------------------------


7. Printer Setup

The "Printer Setup" tool allows upgrading the setup of the installed printers.
The first window shows is the following:



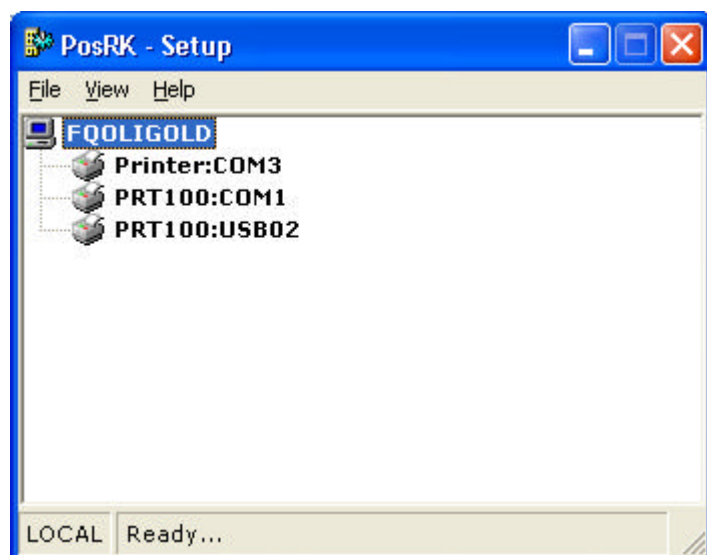
Using this window it is possible to select the feature to use:

- ?? **Load setup from disk**
- ?? **Create setup file**
- ?? **Enter printer setup**

 <i>Systems Division</i>	Title Resource Kit for PRT100 Printer User's Guide	Rev. 1.04	Date 09/07/2004	Page 13/19
---	---	----------------------------	----------------------------------	-----------------------------


7.1. Enter printer setup

After selecting a printer the program will display the window with all the setup parameter:

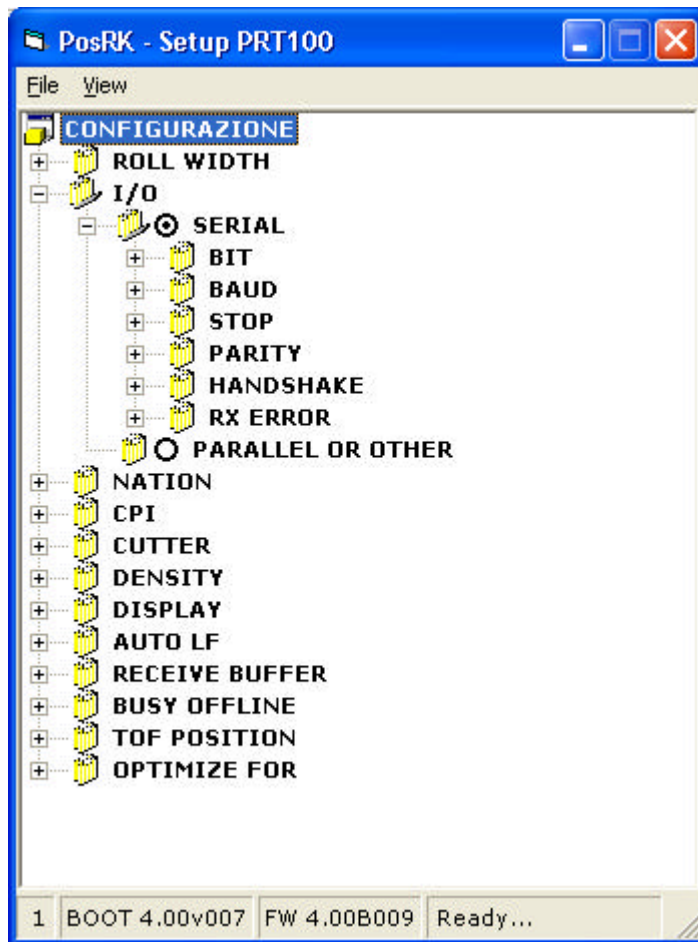


The setup is represented as a tree.

Clicking on the menu's items it is possible to open the folder to view the parameters.

 Systems Division	Title Resource Kit for PRT100 Printer User's Guide	Rev. 1.04	Date 09/07/2004	Page 14/19
--	---	---------------------	---------------------------	----------------------


Clicking on the radio button it is possible to select a parameter.



At this point, using the “File” menu it is possible to perform the following actions:

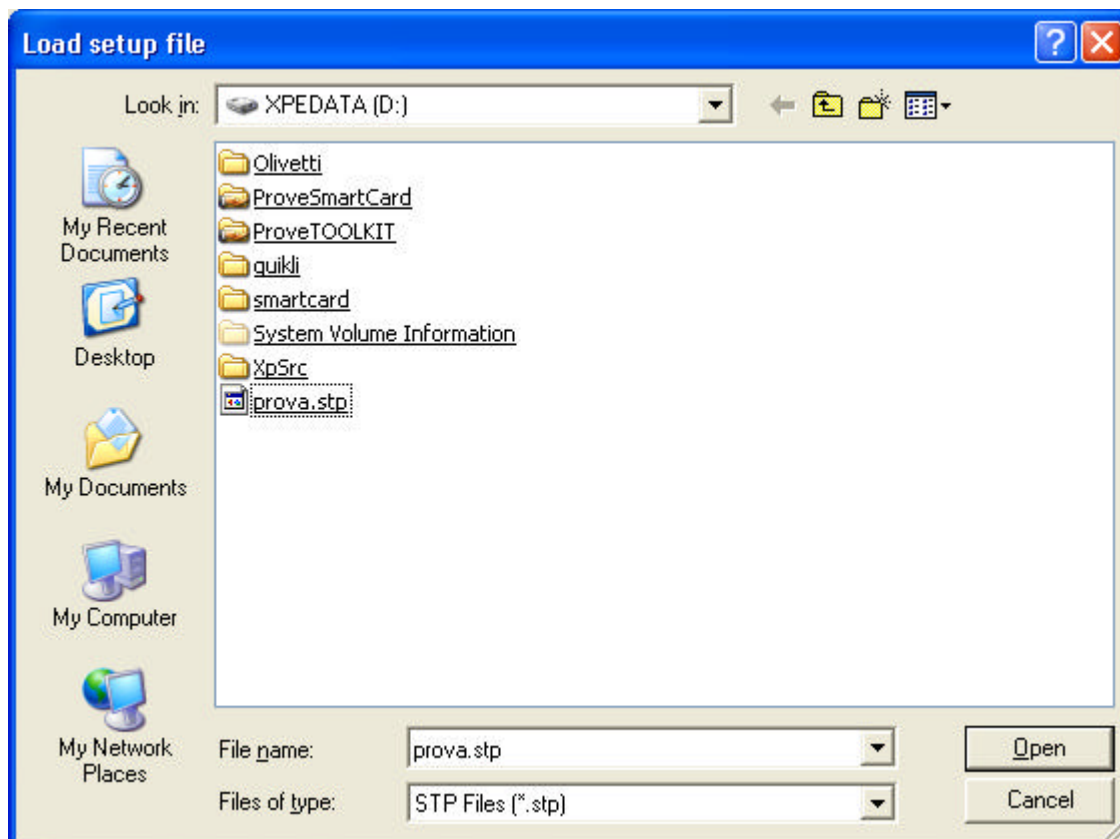
- ?? Download to download the setup to the printer
- ?? Save to save the setup on file
- ?? Exit from the program

Using the option “Refresh” in the “View” menu it is possible to re-load the setup from the printer.


 Systems Division	Title Resource Kit for PRT100 Printer User's Guide	Rev. 1.04	Date 09/07/2004	Page 15/19
--	---	----------------------------	----------------------------------	-----------------------------

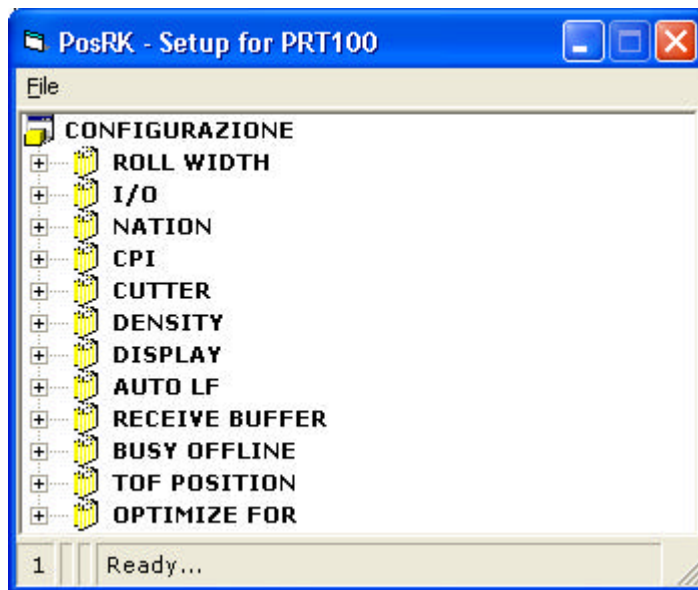
7.2. Load setup from disk

This feature allows loading a setup file previously generated, modifying the file and downloading it to the printer. The printer recognizes the settings and update itself.




The setup files have a proprietary file format recognized by the .stp extension. After choosing the file the following window is shown:

 <i>Systems Division</i>	Title Resource Kit for PRT100 Printer User's Guide	Rev. 1.04	Date 09/07/2004	Page 16/19
---	---	----------------------------	----------------------------------	-----------------------------



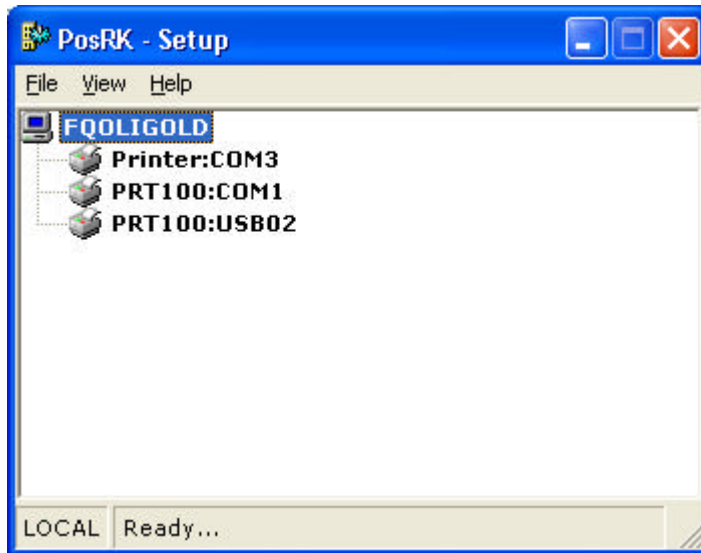
At this point it is possible to modify the file and/or, using the "File" menu to perform the following actions:

- ?? Download the file to the printer
- ?? Load a new setup file
- ?? Save the setup file
- ?? Exit from the program

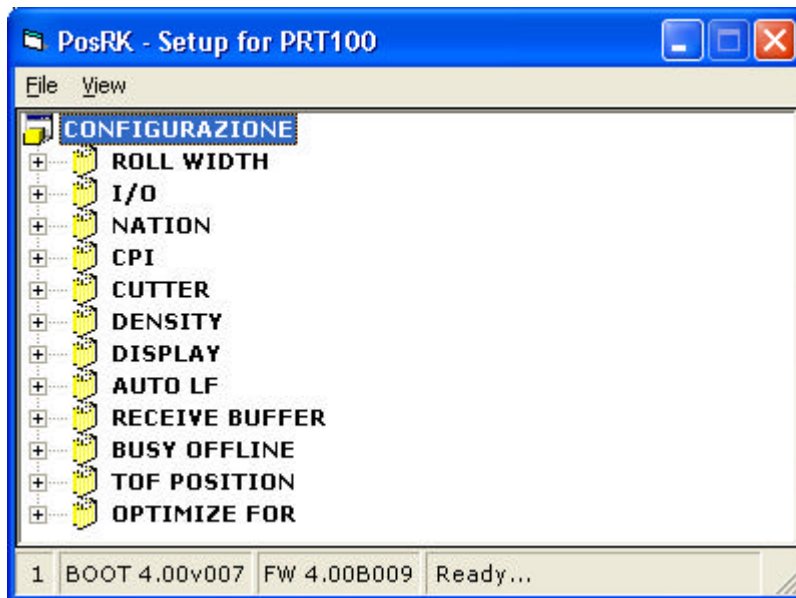
 <i>Systems Division</i>	Title Resource Kit for PRT100 Printer User's Guide	Rev. 1.04	Date 09/07/2004	Page 17/19
---	---	----------------------------	----------------------------------	-----------------------------

7.3. Create setup file

In order to generate a new setup file it is necessary to load the setup from the reference printer and save it to the file:




After selecting a printer the program will display the window with all the setup parameter:



At this point, using the “File” menu it is possible to perform the following actions:

- ?? Download to download the setup to the printer
- ?? Save to save the setup on file
- ?? Exit from the program

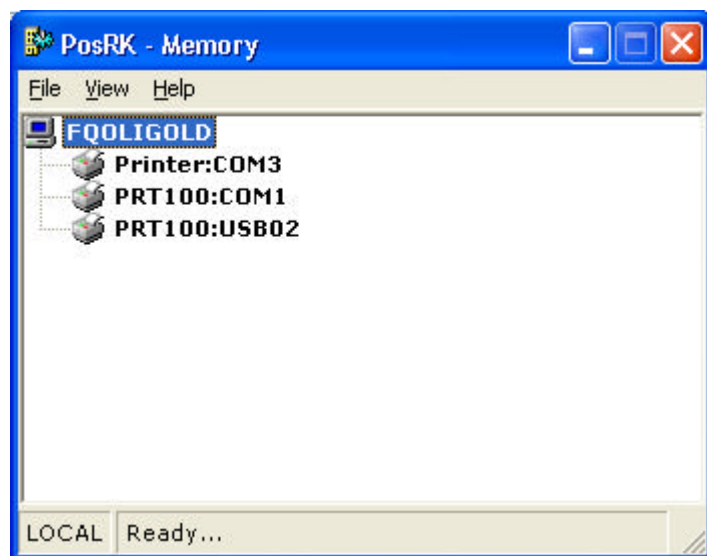
Using the option “Refresh” in the “View” menu it is possible to re-load the setup from the printer.

 <i>Systems Division</i>	Title Resource Kit for PRT100 Printer User's Guide	Rev. 1.04	Date 09/07/2004	Page 18/19
---	---	----------------------------	----------------------------------	-----------------------------

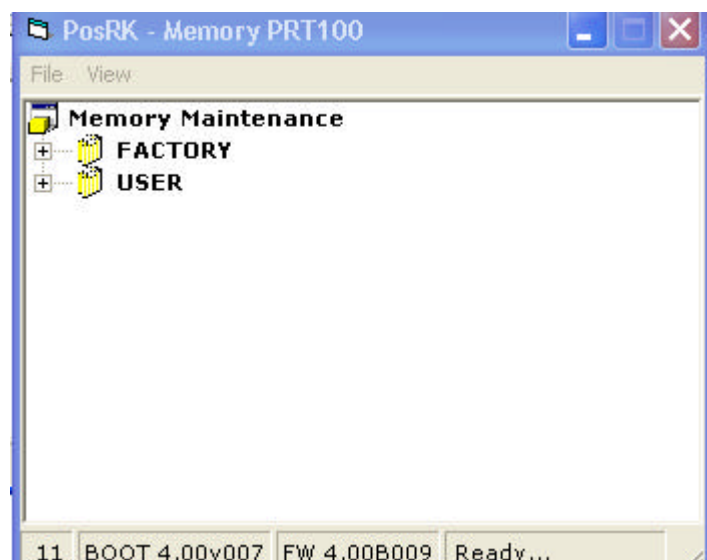
8. Memory parameters

This tool allows loading and updating the printer memory parameters.

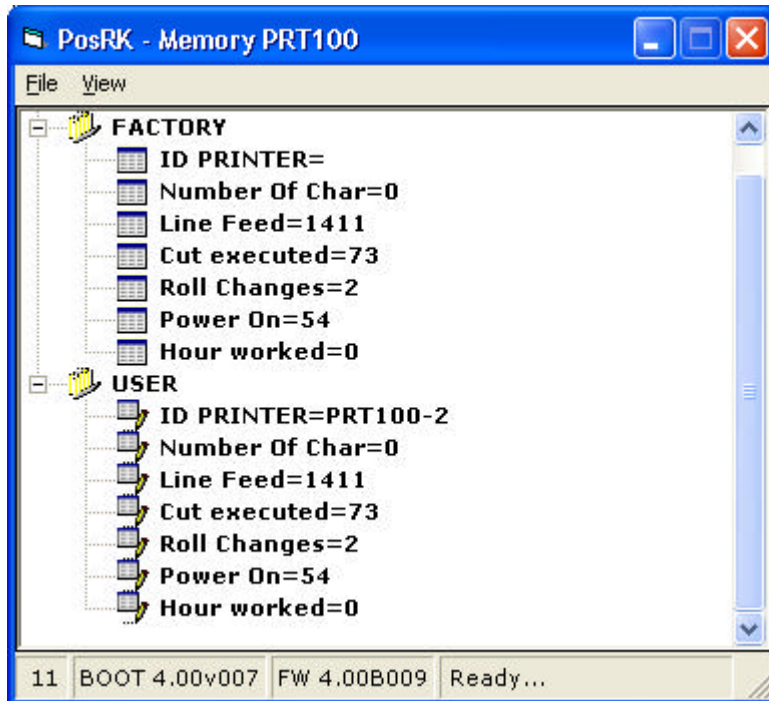
The first step is to select the printer:



After that the printer parameters are shown:



It is possible to see both the factory and user parameters:



The factory parameters cannot be changed. The user parameters can be modified as follows:

1. The ID PRINTER can be changed
2. All the other user's parameters can be only set to 0

In order to change the parameter's values it's enough to click in the tree on the parameter item.