 <i>Systems Division</i>	Title POSDemo for PRT100 Printer User's Guide	Rev. 1.00	Date 16/07/2003
--	--	----------------------------	----------------------------------

POSDemo for Retail POS


User's Guide

for PRT-100 POS Printer model

 <i>Systems Division</i>	Title POSDemo for PRT100 Printer User's Guide	Rev. 1.00	Date 16/07/2003	Page 2/6
---	--	----------------------------	----------------------------------	---------------------------

Contents

1. GENERALITY.....	3
1.1. Document releases.....	3
1.2. Reference documents.....	3
1.3. Conventions	3
2. INTRODUCTION	4
3. SELECT PRINTER WINDOW	4
4. MAIN WINDOW	5

 <i>Systems Division</i>	Title POSDemo for PRT100 Printer User's Guide	Rev. 1.00	Date 16/07/2003	Page 3/6
---	--	----------------------------	----------------------------------	---------------------------

1. Generality



1.1. Document releases


Revision	Date	Pages	Comments
1.00	16/07/2003	10	First edition

1.2. Reference documents

Reference	Name	Description	Code
1	Printer Configuration Tool.pdf	Printer Configuration Tool User's Guide	
2	PRT100_ResKit.pdf	Resource Kit User's Guide	

1.3. Conventions

Example	Description
( 1)	Reference document number. Es. ( 1) Means first document of the reference documents list.

 <i>Systems Division</i>	Title POSDemo for PRT100 Printer User's Guide	Rev. 1.00	Date 16/07/2003	Page 4/6
---	--	----------------------------	----------------------------------	---------------------------

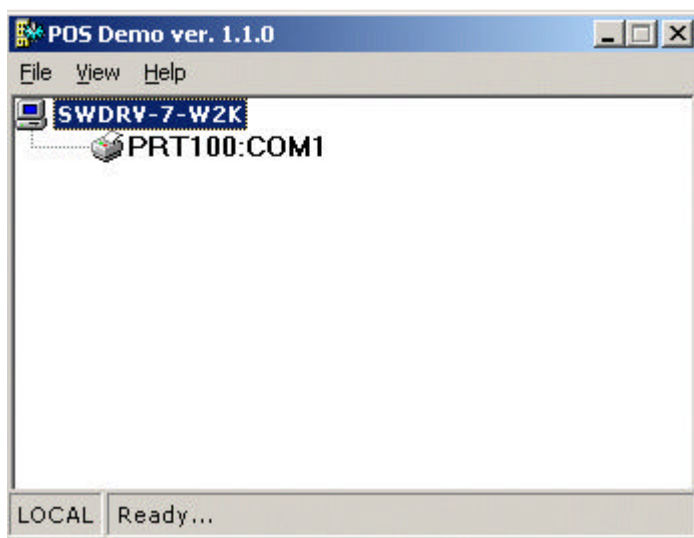
2. Introduction

This document describes the PosDemo application for retail printers. PosDemo is an application that can be used with the PRT100 to demonstrate its features. The application is able to recognize the printer plugged in and adapt the its user interface to the printer capabilities.

NOTE: Before working with the POSDemo it is necessary to configure the printer using the Printer Configuration Tool (see 1).

3. Select Printer Window

When the PosDemo starts it shows the Select Printer Window to choose the printer to use for the demo.



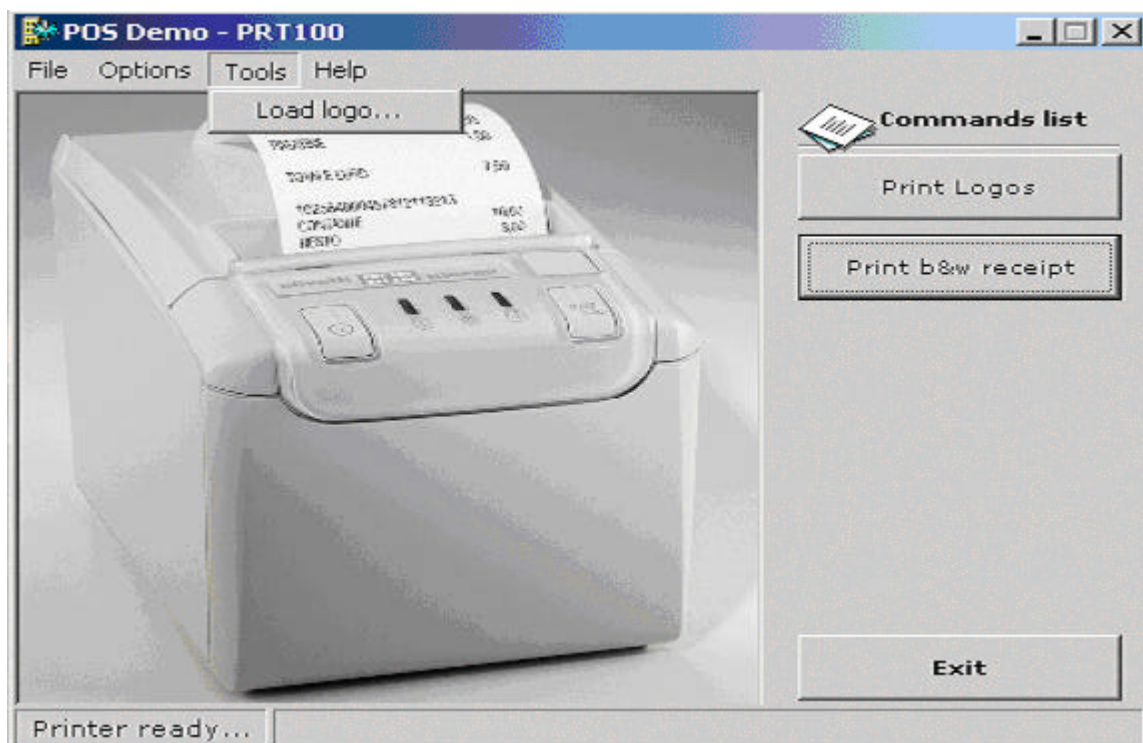
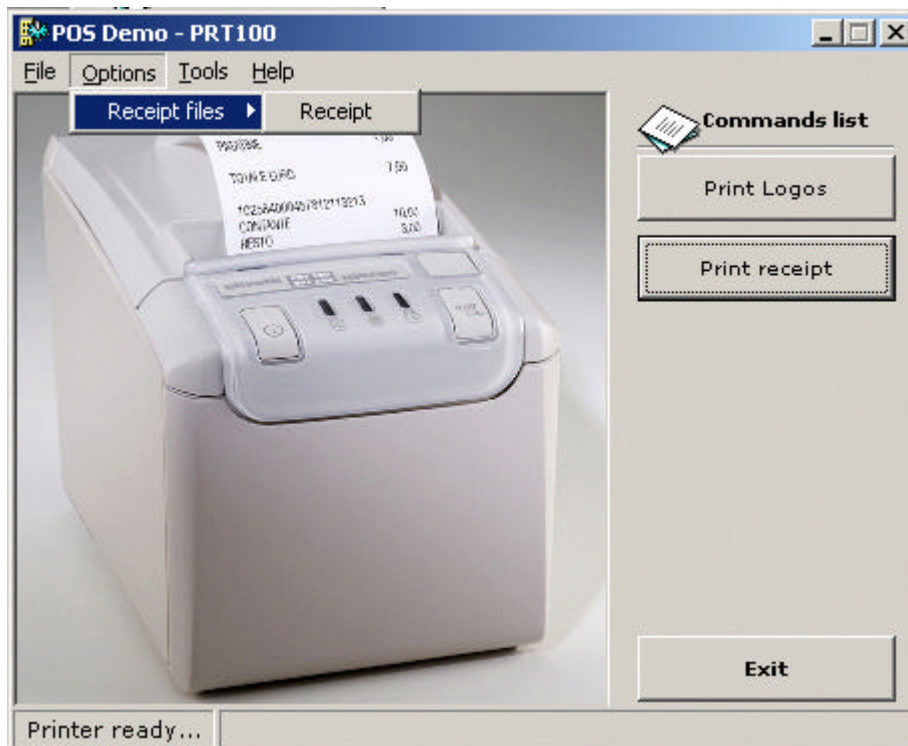
After selecting a printer the program sends the appropriate command to the printer to read the printer ID. If the printer is recognized the program show the right demo Main Window.

The Main Window shows a number of "Functionality Buttons" as the functionalities that need to demonstrate. Any button, if need, can be associated to a .txt file that represents the content to print.

The file can be associated in two way:

- ?? Pressing the "Functionality Button" for the first time, the program allows to browse in the PC's HDU to chose the file.
- ?? Using the "Option" menu of the Main Window. This menu has a number of item as the "Functionality Buttons" that need to configure.

One of the "Functionality button" common for any printer is the "Print Logos" button. It allows to print all the logo stored in the printer memory.



The "Tools" menu allows to open the "Load Logos" window. The Logo Download procedure is described in the Resource Kit User's Guide (2)